

Psychology Student Update

Department Information:

- Psychology Department website: www.cogsci.uci.edu
- Psychology Administrative Suite: SBSG 2201
- Department Chair: Mike D'Zmura SBSG 2201 (949) 824-2969 mdzmura@uci.edu
- Undergraduate Director: Christine Lofgren SBSG 2304 (949) 824-8497 crlofgre@uci.edu
- Undergraduate Curriculum Director: Ted Wright SBSG 2554 (949) 824-7589 cewright@uci.edu

Individual Highlights:

Reminder/ Getting Involved	2
Research	3
Curricula/ Requirements	4
Sample Program	5
Course Offerings	6

Welcome from the Department

Dear Psychology Student,

We'd like to welcome you to UCI and the start of the 2009-10 academic year! This newsletter will provide you with general information about the psychology major. Please read this carefully and keep it handy for future reference.

We hope this newsletter will help you plan your schedule, so you can get the most out of your UCI education. We look forward to seeing and working with you during your academic career.

Sincerely,

Mike D'Zmura
Professor & Chair
Cognitive Sciences

Christine Lofgren
Undergraduate Director
Cognitive Sciences

Charles E. (Ted) Wright
UG Curriculum Director
Cognitive Sciences

Finding Information

Department Website:

The department website (www.cogsci.uci.edu) includes useful information such as this newsletter, the current schedule of classes, faculty offices, phones and e-mail links, research lab information, and current events including talks of interest to psychology majors.

Cog Sci website's People page for office locations.

Undergraduate Director:

Dr. Christine Lofgren is available during the school year for consultation on planning your psychology major. See the upper left section for her contact information.

Undergraduate Student Affairs Office:

Do you have questions about satisfying your major or general school requirements for graduation?

See one of the Academic or Peer Counselors in the Social Sciences' Undergraduate Student Affairs Office (formerly the Counseling Office):

Location: SBSG 1201.
Hours (M-F): 8 am – 5pm
(closed between 12-1pm)

Academic Counselors:
(949) 824-6803

Peer Advisors:
(949) 824-7263

Department/Faculty Offices:

We've moved! The department administrative suite has moved into the new building, Social & Behavioral Sciences Gateway (Bldg. 214) on the 2nd floor in room 2201.

Faculty Offices are located in SBSG (2nd floor) as well as in the Social Science Plaza A and B buildings. Refer to the

Social Sciences Academic Resource Center (SSARC):

SSARC provides information services for all Social Science undergraduate majors. SSARC houses information on graduate programs and opportunities for scholarships, internships, and jobs.

Call (949) 824-8322 or ssarc@uci.edu for information and hours of operation.

An Important Reminder

As a Psychology major, you must **successfully complete** the School of Social Sciences' mathematics requirement **BEFORE** taking any of the courses that fulfill the departmental **laboratory/research methods requirement**.

How does this affect you?

If you don't successfully complete your math before your senior year – or 5th year if taking 5 years to complete the degree – you **WILL NOT** graduate on time.

Please refer to the section on the Laboratory Requirement for course options.

“A good way to start getting involved in research projects is to approach faculty members that you have had as instructors and whose area of expertise interests you.”



Getting Involved in Your Major - Honors

Psi Chi Honor Society:

The Psi Chi National Honor Society in Psychology has been active on the UCI campus since our charter was granted in June 1988.

Eligible juniors and seniors are invited to apply for membership based on their outstanding academic performance.

You must have taken at least four upper-division psychology courses here at UCI to be eligible.

Applications are available in November and April online at:

<http://www.cogsci.uci.edu/undergraduates.php#honorsociety>.

Honors Program:

A two-year honors program in Psychology is offered to upper-division students who are interested in pursuing graduate study in psychology and/or seeking challenging research experiences as a capstone to their undergraduate experience.

Year 1 includes enrollment in Psych H111A-B-C (Honors Experimental Psychology) and Psych H101A (Honors Seminar in Psychology) during fall.

In Year 2, students undertake their own research project under the direction of a Cognitive Sciences faculty member. Students enroll in Psych H101B-C and complete a senior honors thesis.

Requirements:

- Starting junior (or 4th year if taking 5 years to complete degree);
- Overall GPA of at least 3.2; and
- GPA of at least 3.5 in psychology courses (*this requirement may be waived in specific cases*)

Applications will be available online. Please check back on the website for specific deadline dates:

<http://www.cogsci.uci.edu/undergraduates.php#honors>.

Psychology Club

Psychology Club is an academic club for psychology majors and other students interested in the study of psychology.

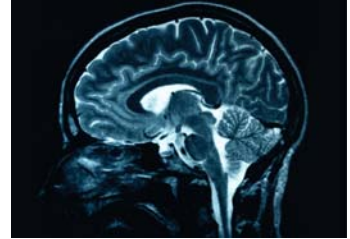
The club sponsors guest speakers and social events to help students become better acquainted with one another and with faculty members who share similar interests. It also informs students of various career opportunities in psychology and related fields.

Research in Psychology

Participation in research should be an important and rewarding part of your education. Many of the faculty members in the Cognitive Sciences Department include undergraduate students in their ongoing research and supervise independent research undertaken by students.

A good way to start getting involved in research projects is to approach faculty members that you have had as instructors and whose area of expertise interests you. A list of faculty and their current office hours is available on the website (www.cogsci.uci.edu).

It is best to speak to faculty members during their posted office hours or to contact them via e-mail to schedule an appointment.



Psychology Courses in Research and Field Work

There are several courses that will give you exposure to research and field work.

Psych 141J-K-L (Jumpstart: Early Language, Literacy, and Social Development) is an experiential course in the field of child development and education. Students commit a total of eight hours per week as mentors of disadvantaged preschool children. The prerequisite is consent of the instructor. Further information is given in the General Catalogue.

Psych 144A-B-C (Habla: Language Intervention for Disadvantaged Children) trains students (fall quarter) to deliver home visits (winter and spring) that promote school readiness among 2-4 year-olds from low SES and educational backgrounds. Further information is given in the General Catalogue.

Psych 145P-Q-R (Attention and Learning Deficits in Children) includes both classwork and fieldwork with attention-deficit disordered children at the Child Development Center on North Campus. This sequence must begin the fall quarter.

Psych 148A, B, C (Cognitive Development Research) provides experience in cognitive development research, centered around the child's acquisition of number words and concepts. Students conduct research and review and discuss each other's projects. A prerequisite is the consent of instructor. Further information is given in the General Catalogue.

Psych 164A, B, C (Neuroscience of Language Research) provides experience in cognitive neuroscience research and covers a range of neuroscience of language research topics including psycholinguistic and neuroscience foundations, methods, experimental design, and content areas such as speech perception/recognition, production, sensory-motor integration, lexical access, comprehension, working memory, sign language, and aphasia. A prerequisite is the consent of the instructor.

“Participation in research should be an important and rewarding part of your education.”

Curricula Guidelines

The tentative course offerings for this academic year are listed at the end of this newsletter.

These courses are only the courses offered by the Cognitive Psychology Department. Other psychology courses may be offered by different departments and cross listed with this department.

Please refer to WEBSOC (<http://websoc.reg.uci.edu/perl/WebSoc>) for the most up to date list of courses offered each quarter.

"You must **complete** one (1) year of calculus or statistics **BEFORE** enrolling in Psych H111A, 112A, 112M, or 112R."

Laboratory/Research Requirement

There are three (3) options to fulfill the laboratory requirement that will be offered this year:

- Psych 112A-BW-C (Experimental Psych)
- Psych 112M (Research Methods in Psychology), or
- Psych 112R (Cognitive Robotics) – *by petition only*.

Students wishing an opportunity to conduct their own research and fulfill the upper-division writing requirement should take *Psych 112A-BW-C*, a 3-quarter sequence. The **W** in the course designation for Psych 112BW means that

it fulfills the upper-division writing requirement. Psych 112A and 112BW have co-requisite labs.

Psych 112M is for majors who wish to fulfill the lab requirement separately from upper-division writing. It is a one-quarter course with a co-requisite lab and will be offered in the fall and spring.

Students who wish simply to fulfill the lab/research methods requirement in one quarter should take Psych 112M.

Psych 112R can also be taken by majors who wish to fulfill the lab/research methods requirement in one quarter (*by petition only*). This one-quarter course with a co-

requisite lab will be offered in winter quarter.

Note that 112R is a new course to be effective this year. It can be used to fulfill the one quarter lab requirement by petition only (at this time).

If you have taken one (1) year of statistics *or* Math 2A-B and 7, you have met the mathematical prerequisite for all of these courses.



Computer Science Requirement

Although the School of Social Sciences allows the computer science requirement to be fulfilled by three (3) options, one (1) of these options is not recommended for psychology majors.

In meeting the lab requirement, some knowledge of programming and program construction is important. Students taking ICS 21 or Informatics 41 will be ex-

posed to these areas.

Social Sciences 3A will not give you the background needed for the laboratory requirement.

Other courses which may be used (by petition) to fulfill this requirement and which provide a good background for those planning to go on to graduate school include:

- Psych 114M (Matlab) and
- Psych 119 (MEL or C Programming).

For any of these courses to help you in the lab requirement, you must take it **before** you take the lab course!

Helpful Hints

1. Plan to take ~16 units per quarter.
2. Any courses taken to satisfy your major requirements must be completed with a letter grade **except** those courses offered as P/NP only.

If you use courses from your major to satisfy General Education requirements, you must take them for a letter grade (unless they are offered P/NP only).

3. You should fulfill University requirements first while laying a foundation for psychology with Psych 9A,B,C and psychology core courses.

Try to complete the one (1) year of statistics before your junior year, so you can fulfill the lab requirement in your junior year.

This will allow you to conduct research in your senior year and let you take electives in other areas of interest to you.

4. Generally, psychology majors should **not** take lower division psychology courses other than Psych 9A,B,C.

Psychology majors may **not** take Psych 7A for credit toward the major.

5. If completing the language requirement (General Ed VI) by taking additional courses in a language previously studied, take the courses as soon as possible while you still remember what you previously learned.

6. Course sequences **should** be taken in order and in many cases they **must** be taken in order.

Exception: Psych 9A,B,C may be taken in any order.

7. The math requirement (General Ed V) can be fulfilled by:
 - Math 2A-B & 7, or
 - Soc Sci 10A-B-C
 - as well as any 10A-B-C series offered by other Soc Sci departments.

Math 2A-B, 7 is recommended for anyone considering graduate school.



Social & Behavioral Sciences Gateway Building



Social Science Plaza

Sample Programs of Study – Psychology Majors

	General	Grad School	Honors	Transfer
Freshman	Psych 9A,B,C 2 Intro Soc Sci 1 Computer 6 General Ed	Psych 9A,B,C Humanities Core Math 2A-B, 7	Psych 9A,B,C Humanities Core Math 2A-B, 7	
Sophomore	3 Quarters Statistics ¹ 3 Core ² 6 General Ed/Electives	3 Quarters Statistics ¹ 3 Core ² 2 Intro Soc Sci 1 Computer 3 General Ed	3 Quarters Statistics ¹ 3 Core ² 2 Intro Soc Sci 1 Computer 3 General Ed Apply to Honors in spring	
Junior	1 Core ² 3 Module/ UDP ³ 4 General Ed/Electives and select one (1): - Psych 112A-BW-C & 1 UDP ³ - Psych 112M & 3 UDP ³	1 Core ² 3 Module/ UDP ³ 4 General Ed/Electives Psych 112A-BW-C & 1 UDP ³	Psych H111A-BW-C Psych H101A 1 Core ² 2 UDP ³ 5 General Ed/Electives	Psych 9A,B,C 3 Quarters Statistics ¹ 1 Computer 2 Intro Soc Sci 3 Core ²
Senior	9 Electives and select one (1): - 2 Psych 199 & Psych 190 - 3 UDP ³	9 Electives 2 Psych 199 1 Psych 190	8 Electives Psych H101B-C 2 Psych 199	1 Core ² 3 Module/ UDP ³ 1 Elective and select one (1): - Psych 112A-BW-C & 3 UDP ³ - Psych 112M & 5 UDP ³

NOTES:

¹3 Quarters Statistics is either Soc Sci 10A-B-C, or Math 2A-B, 7 the Math series recommended for those planning to attend graduate school in Psychology.

²Core is a psychology core course, an upper division course with the ending number "0".

³UDP is an upper division psychology course.

Department of Cognitive Sciences

School of Social Sciences
University of California, Irvine
3151 Social Science Plaza
Irvine, CA 92697-5100

DEPARTMENT
ADMINISTRATIVE SUITE:

SBSG 2201

PHONE:
(949) 824-3771

FAX:
(949) 824-2307

E-MAIL:
cogsci@uci.edu

WEB:
<http://www.cogsci.uci.edu>

2009-10 Course Offerings

The following list is the tentative undergraduate course offerings from the Department of Cognitive Sciences. Offerings are subject to change.

Make sure you have backup options in mind when figuring out your class schedule.

Please refer to WEBSOC (<http://websoc.reg.uci.edu/perl/WebSoc>) for the most up-to-date list of the department's course offerings

Courses listed below are those being taught and offered by the Department of Cognitive Sciences. Other courses, offered by other departments, may be cross-listed with this department but are not shown below. Check on WEBSOC for these courses.

Course descriptions can be found on the online UCI catalogue at:
<http://www.editor.uci.edu/catalogue/ss/ss.4.htm>.

Fall 2009:

7A	Intro to Psych	114M	Matlab	144A	Habla
9A	Psych Fundamentals	120A	Abnormal Psych	145P	Atn & Lrn Deficit
9B	Psych Fundamentals	121M	Motivation	148A	Cog Development Res
9C	Psych Fundamentals	121S	Psych of Sleep & Dreams	159	Creating Languages
10C	Prob & Stats III	130A	Sens & Perc Processes	160A	Cog Neuroscience
H101A	Honors Seminar I	131A	Vision	164A	Neuro Lang Research
H101B	Honors Seminar II	140L	Prin of Learning Thry		
H111A	Hon Experiment Psych	141DW	Cog Development		
112A	Experiment Psych	141J	Jumpstart		
112M	Psych Res Methods	143P	Human Prblm Solving		

Winter 2010:

7A	Intro to Psych	122I	Org/Industrial Psych	164B	Neuroscience Lab Res
9A	Psych Fundamentals	140M	Human Memory		
9B	Psych Fundamentals	141K	Jumpstart		
9C	Psych Fundamentals	144B	Habla		
56L	Acquisition of Lang I	145Q	Atn & Lrn Deficit Chd II		
111BW	Hon Experiment Psych	146MW	Writing Abt Memory		
112BW	Adv Experiment Psych	148B	Cog Development Res		
112R	Cognitive Robotics	155	Psych of Lang		
120P	Personality Theory	160D	Brain Disorders & Beh		
122C	Clinical Psych	161	Lang & the Brain		

Spring 2010:

7A	Intro to Psych	120D	Developmental Psych	162B	Human Mem Disorders
9A	Psych Fundamentals	120H	History of Psych	164C	Neuroscience Lab Res
9B	Psych Fundamentals	129	Sports Psychology		
9C	Psych Fundamentals	131B	Hearing		
H101C	Honors Seminar III	140C	Cognitive Science		
H111C	Hon Experiment Psych	141L	Jumpstart		
112C	Experiment Psych	144C	Habla		
112M	Psych Res Methods	145R	Atn & Lrn Deficit		
113T	Testing	148C	Cog Development Res		
120A	Abnormal Psych	156A	Acquisition of Lang II		